

*ASTA
NEWSLETTER*



APRIL



PREFACE

BACK IN THE RHEINGAU AND READY FOR SUMMER

WE HOPE YOU WERE ABLE TO ENJOY THE SEMESTER BREAK, RELAX, AND PERHAPS **SPEND THE EASTER HOLIDAYS WITH YOUR LOVED ONES**. NOW WE'RE HEADING INTO THE SUMMER SEMESTER WITH RENEWED ENERGY, AND THE CAMPUS IS COMING BACK TO LIFE.

LOOK FORWARD TO SUNNY DAYS BY THE RHINE, PLENTY OF TIME TOGETHER, AND OF COURSE THE EVER-POPULAR BEER BARREL PARTIES.

A SPECIAL HIGHLIGHT AWAITS YOU AGAIN THIS SEMESTER: OUR **BOAT PARTY ON MAY 21**. SO MARK YOUR CALENDARS NOW —IT'S WORTH IT!

WE LOOK FORWARD TO SEEING YOU ALL BACK ON CAMPUS AND KICKING OFF A GREAT SUMMER SEMESTER TOGETHER.

YOUR ASTA



STRUCTURE

- 1** ASTA EVENTS
- 2** ASTA JOB OFFERS
- 3** ORIENTATION - PROMOTION -
CAREER
- 11** GEISENHEIMER ALUMNI PORTAL
- 12** AROUND THE CAMPUS
- 21** WHAT ELSE IS GOING ON...
- 24** ASTA GOOD TO KNOW
- 26** DAS ALTE WEINFASS
- 27** ASTA OFFICE & STORE
- 29** MEETINGS
- 30** CONTACT

ASTA EVENTS

sosE Übersicht AstA EVENTS

16.04

➤ ERSTES FASS

Donnerstags!!!

ab 17:30 Uhr

Wein: Von der Mark



05.05

➤ KRIMIDINNER

18:00 Uhr

NUR 20 Tickets!!!



06.05

➤ EL CLASSICO
FUSSBALLSPIEL

21.05

➤ BOOTSPARTY

am RheinuferGeisenheim
ab 16:00 Uhr



16.06

➤ ZUKUNFTSSYMPOSIUM

Es geht in die 4. Runde!

INFO

➤ **Das Fass findet dieses Semester
Donnerstags statt!**

➤ **Mitarbeiter:innen gesucht**

Du willst Teil vom Team werden?
Bewirb dich jetzt – wir suchen motivierte
Mitarbeiter:innen für Das Alte Weinfass!



ASTA JOB OFFERS

ALTES WEINFASS (M/W/D)

OUR WINE BARREL NEEDS REINFORCEMENT FOR A POSITION AS SOON AS POSSIBLE. THE TASKS INCLUDE ASSISTING WITH THE SALE OF DRINKS DRINKS, FOOD AND SETTING UP AND DISMANTLING THE BAR REL. DO YOU ENJOY SELLING AND WANT TO WORK IN A TEAM? THEN YOU'VE COME TO THE RIGHT PLACE!

YOU SHOULD BE ABLE TO WORK INDEPENDENTLY AND RESPONSIBLY; YOU SHOULD ALSO BE PHYSICALLY RESILIENT, HAVE A DRIVER'S LICENSE AND LIVE IN THE GEISENHEIM AREA. EXPERIENCE OR KNOWLEDGE IN THE FIELD IS A PLUS, BUT NOT A MUST.

ARE YOU INTERESTED? THEN SEND US A SHORT APPLICATION (CV AND A SHORT LETTER OF LETTER OF MOTIVATION) TO VORSTAND@ASTA-GEISENHEIM.DE. WE LOOK FORWARD TO HEARING FROM YOU!

PS: ALL DEPARTMENT MEMBERS ARE PAID ON A PAID ON A MINI-JOB BASIS!

ORIENTATION - PROMOTION - CAREER

CAREER SERVICE EVENTS

WE'RE KICKING OFF THE SUMMER SEMESTER, AND THE **CAREER SERVICE** IS DIVING RIGHT IN WITH FRESH TOPICS ON CAREERS, PERSONAL DEVELOPMENT, AND SKILLS. WHETHER YOU'RE PLANNING WHAT COMES AFTER GRADUATION OR SIMPLY WANT TO GROW PROFESSIONALLY, YOU'LL FIND INSPIRATION, PRACTICAL KNOWLEDGE, AND PLENTY OF OPPORTUNITIES TO REFINE YOUR NEXT STEPS HERE.

PARTICIPATION IS FREE—ALL IT TAKES IS A LITTLE CURIOSITY, REGISTRATION, AND A COMMITMENT TO FOLLOW THROUGH. AND HERE'S WHAT'S COMING UP NEXT:

LEADERSHIP COMPETENCIES & SKILLS, APRIL 14, 2026, 6:00-9:00 PM

DO YOU WANT TO UNDERSTAND HOW EFFECTIVE LEADERSHIP WORKS AND TAKE ON RESPONSIBILITY YOURSELF? IN THIS WORKSHOP, YOU'LL LEARN ABOUT THE FIVE DIMENSIONS OF LEADERSHIP—FROM SELF-LEADERSHIP TO LEADING WITHOUT AN OFFICIAL ROLE.

YOU'LL REFLECT ON YOUR OWN EXPERIENCES, RECOGNIZE WHAT MAKES STRONG LEADERS, AND GAIN CONCRETE TOOLS YOU CAN APPLY DIRECTLY IN YOUR STUDIES, PART-TIME JOB, OR FUTURE CAREER.

REGISTER HERE:
[ZUR ANMELDUNG](#)

**CREATING A COMPELLING APPLICATION PACKAGE,
APRIL 22, 2026, 6:30-8:00 P.M.**

DO YOU WANT YOUR APPLICATION TO STAND OUT FROM THE CROWD AND MAKE THE MOST OF THE BEST JOB OPPORTUNITIES AVAILABLE TO YOU? IN OUR ONLINE SESSION, WE'LL SHOW YOU HOW TO EFFECTIVELY HIGHLIGHT YOUR PROFESSIONAL STRENGTHS, APPLY THE RIGHT APPLICATION STRATEGIES, AND PREPARE YOURSELF OPTIMALLY FOR YOUR NEXT CAREER MOVE.

LEARN HOW TO SHOWCASE YOUR SKILLS AND IMPRESS EMPLOYERS THROUGH PROFESSIONAL SELF-MARKETING. NOW IS THE PERFECT TIME TO TAKE CONTROL OF YOUR CAREER!

REGISTER HERE:
[ZUR ANMELDUNG](#)

**SPECIAL EVENT: MEET CAREER FAIR,
APRIL 30, 2026, 12:00 PM - 4:00 PM**

FROM 12:00 PM TO 4:00 PM, COMPANY REPRESENTATIVES FROM ALL ACADEMIC PROGRAMS WILL BE AVAILABLE FOR DISCUSSIONS IN THE FOYER OF THE CAMPUS BUILDING. WHETHER YOU'RE LOOKING FOR INTERNSHIPS, FULL-TIME POSITIONS, OR JUST EXPLORING YOUR OPTIONS: THIS IS A GREAT OPPORTUNITY TO CONNECT WITH COMPANIES.

WHAT ELSE IS HAPPENING THAT DAY:

- PROFESSIONAL HEADSHOT PHOTOS AVAILABLE FOR FREE
- DELICIOUS SPECIALTY COFFEES FROM THE BARISTA - FOR FREE
- INSIGHTFUL TIPS (30 MINUTES) ON LINKEDIN
- RAFFLE

**JOB INTERVIEW – SELF-PROMOTION AND
SUCCESSFUL SALARY NEGOTIATION,
MAY 11, 2026, 6:30–8:00 P.M.**

IN THIS SEMINAR, YOU’LL LEARN HOW TO PRESENT YOURSELF CLEARLY AND CONVINCINGLY IN A JOB INTERVIEW, HIGHLIGHT YOUR STRENGTHS, AND ACTIVELY SHAPE THE CONVERSATION. AT THE SAME TIME, YOU’LL GAIN A SENSE OF YOUR MARKET VALUE AND ENTER SALARY NEGOTIATIONS WITH CLEAR STRATEGIES.

BY THE END, YOU’LL APPROACH YOUR NEXT INTERVIEWS WITH GREATER CONFIDENCE AND KNOW HOW TO POSITION YOURSELF SO THAT YOUR INTERVIEWER UNDERSTANDS WHAT YOU TRULY BRING TO THE TABLE.

REGISTER HERE:
[ZUR ANMELDUNG](#)

**POTENTIAL ANALYSIS, PROFILE DEVELOPMENT,
AND SUCCESSFUL SELF-MARKETING,
JUNE 9, 2026, 6:30 – 8:00 PM**

DISCOVER WHAT MAKES YOU UNIQUE, DEFINE YOUR CAREER GOALS, AND LEARN TO PRESENT YOURSELF CONVINCINGLY—BOTH ONLINE AND OFFLINE. WITH POTENTIAL ANALYSIS, SELF-REFLECTION, AND SMART SELF-MARKETING, YOU’LL POSITION YOURSELF FOR JOBS, INTERNSHIPS, AND MORE.

REGISTER HERE:
[ZUR ANMELDUNG](#)

GENERAL STUDY ADVICE

CONSIDERING A MASTER'S DEGREE? FIND ALL THE INFO HERE:

APRIL 13, 2026: MASTER'S INFO EVENING ON WINE
6:00 – 7:00 PM. INFO HERE: [INFOS HIER](#)

APRIL 14, 2026: MASTER'S INFORMATION EVENING ON
FOOD SAFETY
6:00 – 7:00 P.M. INFO HERE: [INFOS HIER](#)

APRIL 14, 2026: MASTER'S INFORMATION EVENING ON
BEVERAGES
7:00 – 8:00 P.M. INFO HERE: [INFOS HIER](#)

15. APRIL 2026: MASTERINFOABEND WEINWIRTSCHAFT
18:00 – 19:00 UHR. [INFOS HIER](#)

APRIL 15, 2026: MASTER'S INFORMATION EVENING ON
LANDSCAPE ARCHITECTURE
7:00 – 8:00 P.M. INFO HERE: [INFOS HIER](#)

APRIL 16, 2026: MASTER'S INFORMATION EVENING ON
HORTICULTURE
6:00 – 7:00 P.M. INFO HERE: [INFOS HIER](#)

GENERAL STUDENT COUNSELING - FIRST POINT OF CONTACT FOR ALL QUESTIONS ABOUT STUDYING:
[HOCHSCHULE GEISENHEIM UNIVERSITY](https://www.hs-geisenheim.de)

WHETHER YOU ARE JUST STARTING OUT, ARE IN THE MIDDLE OF YOUR STUDIES, OR ARE THINKING ABOUT CHANGING COURSES, WE WILL ACCOMPANY YOU ON YOUR JOURNEY:

- WOULD YOU LIKE TO REORIENT YOURSELF OR CHANGE YOUR COURSE OF STUDY?
- ARE YOU CONSIDERING DROPPING OUT OF YOUR STUDIES?
- ARE YOU FACING PERSONAL OR STUDY-RELATED CHALLENGES?
- ARE YOU LOOKING FOR THE RIGHT COURSE OF STUDY BUT DON'T KNOW EXACTLY WHICH ONE SUITS YOU?
- WOULD YOU LIKE TO KNOW WHAT YOU CAN STUDY AT GEISENHEIM UNIVERSITY AND WHAT REQUIREMENTS YOU NEED TO MEET (E.G., UNIVERSITY ENTRANCE QUALIFICATION, PRE-STUDY INTERNSHIP, ETC.)?

JUST GET IN TOUCH WITH US—WE ARE HERE FOR YOU!

**INDIVIDUAL AND PERSONAL,
OPEN-ENDED AND NEUTRAL**

DO YOU HAVE QUESTIONS OR NEED SUPPORT? THEN SIMPLY GET IN TOUCH WITH US - WE ARE HAPPY TO HELP:

BY MAIL AT STUDIENBERATUNG@HS-GM.DE
BY PHONE AT +49 6722 502-705
OR +49 160 970 660 44
IN PERSON ON CAMPUS -
MÜLLER-THURGAU-HAUS, 1ST FLOOR, ROOM 01.01
(MONDAY TO THURSDAY FROM 9 A.M. TO 3 P.M. -
INDIVIDUAL APPOINTMENTS ARE ALSO WELCOME)



ZWISCHEN BILDUNG, UNTERSTÜTZUNG UND PFLEGE

MACH MIT BEI UNSERER KREATIVEN WORKSHOPREIHE IM PROJEKT „INTERCARE“!

Du bist im Spagat zwischen deinem Bildungsweg und der Unterstützung oder Pflege einer nahestehenden älteren Person z. B. eines Elternteils, Großeltern oder einer befreundeten Person? Oder du wirst selbst von einem jungen Menschen, z. B. einem Enkelkind oder einem Nachbarn, unterstützt oder gepflegt? Du möchtest dich über deine Erfahrungen mit anderen austauschen und hast Freude am kreativen Arbeiten? Dann freuen wir uns über deine Teilnahme!

Im Rahmen des Forschungsprojekts „InterCare“ organisieren wir eine Reihe kostenfreier kreativer Workshops, in denen wir ein oft unsichtbares Thema sichtbar machen wollen: Pflege und Unterstützung während einer Ausbildung oder eines Studiums. Mit professioneller künstlerischer Begleitung arbeiten wir gemeinsam an Ideen und Projekten, die eure Erfahrungen mit Pflege und Unterstützung darstellen und für andere sicht- und erfahrbar machen.

SO KANNST DU DICH KREATIV EINBRINGEN:

- Fotos und Videos, Bastelarbeiten, Erstellen von Collagen
- Geschichten oder Gedichte schreiben
- Theater und Performance
- Gestaltung und Aufnahme eines Podcasts
- Du hast eigene Ideen, wie du kreativ werden möchtest? Auch das ist willkommen!

DAS HAST DU DAVON:

- Du kannst dich mit anderen über deine Erfahrungen austauschen
- Du kannst kreativ tätig sein und mit Künstler:innen neue Techniken lernen
- Du kannst zur Sichtbarkeit von Pflege und Unterstützung in der Gesellschaft beitragen
- Pro Workshop erhältst du als Anerkennung eine Aufwandsentschädigung in Höhe von 25€.

WO UND WANN:

- Vor Ort in Frankfurt am Main und online
- Im Mai und Juni 2026
- Wir laden dich zu einer Online-Infoveranstaltung und zum ersten Kennenlernen am 21.04.2026 ein.

Du möchtest Teil dieser Workshopreihe sein und deine Erfahrungen und Gedanken kreativ darstellen und teilen? Dann melde dich bei Anna Wanka unter wanka@em.uni-frankfurt.de!

Weitere Informationen zum von der Volkswagen Stiftung geförderten Projekt, findest du unter: *InterCare - CERII - ARU*



International Office

We inform, advise and support students at Geisenheim University who would like to spend some time during their studies abroad, as well as international students before and during their stay in Geisenheim.

Current Deadlines and Events

May 31

Application deadline for the Hesse-Queensland Program (study in Australia without tuition fees)

Application deadline ~~PROMOS~~ (scholarship for internships and study visits outside Europe)

Useful Information on our Website

Partner Universities



Erasmus+



Testimonials



Office hours

Monday - Thursday
10 am - 12 pm

Monday, Tuesday and Thursday
1.30 pm - 3.30 pm

And by appointment

Contact

Elke Reichel (Outgoings)
Müller-Thurgau-Haus, Room 02.04
Tel. +49 6722 502 728
Elke.Reichel@hs-gm.de

Rita Broschek (Incomings)
Müller-Thurgau-Haus, Room 02.04
Tel. +49 6722 502 786
Rita.Broschek@hs-gm.de

Meet our International Students

Name: Josh Campbell

University: Lincoln University

Study Program: Viticulture & Oenology

What can students study at your home university?

At Lincoln University, you can study everything from farm to fork. Nearly all of the degrees focus on the relationship between land, food, and ecosystems. We are most famous for our degrees in Agriculture, Horticulture, and Viticulture but also have degrees in Landscape Architecture, Environmental Management, and Food Science. Students can also study commerce with a specific industry focus, such as Agribusiness, Hotel and Tourism Management, and Supply Chain Management.

What is special about your home university?

New Zealand has one of the most advanced agricultural industries in the world but not because of big barns or industrial factories. We are the world leader in pastoral science using high-tech genetics and management to farm efficiently outdoors. Lincoln University is the primary destination for kiwi students to study everything to do with Land. Lincoln is unique because it is the smallest university in New Zealand, with only around 4,000 students. This creates a friendly atmosphere where everyone knows everyone. It's located right in the middle of the Canterbury Plains, so student culture is huge on rugby, farming, off-roading, hunting, and the outdoors. One of my favourite things I think the things I've come to appreciate is the 24/7 library and study area, which is great when you need a place to cram before an exam or submit an assignment 10 minutes before midnight.

Do you have travel tips for the country you are from?

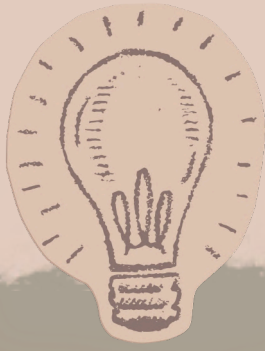
New Zealand isn't a place where you go to see historic cities and centuries of culture, so much so that I would recommend avoiding the cities entirely. To really get a feel for the country, you need to get lost. I think New Zealand's most endearing features are the untouched forests, jagged snow-capped mountains and secluded empty beaches. However, New Zealand doesn't have amazing train or public infrastructure to get to places like this. I highly recommend buying or hiring a car to really explore. Another tip I have would be to not underestimate the power of the sun in Australia or New Zealand during summer. You WILL get sunburnt if you sit for just 30 minutes in the sun with no sunscreen applied, I have had to learn this lesson the hard way many times.

What is the best time to visit your country or region?

Since New Zealand has the exact opposite seasons to Europe, the best time to visit depends on your preferences. October to March offers the warmest weather, perfect for relaxing on the beach or hiking in the forests of the Marlborough Sounds. However, June to September is my favourite time; With a student-priced season pass, we will drive to the ski field every weekend with the university ski club, only about 90 minutes from the university.

What surprised you most when you came to Germany?

When I arrived in Germany, I was most surprised by everything being closed on Sunday, especially when I had no food that day, I had to wait until Monday to eat. Apart from that, we don't really have high speed or regional passenger trains in New Zealand so being able to use them to get anywhere was completely foreign to me. Döner is also pretty great!



Alumni - what?

Alumni = alle, die mal in Geisenheim studiert, gearbeitet oder geforscht haben. Und alle, die finden, dass Geisenheim echt was kann.

Kurz: Die Geisenheimer Familie – überall auf der Welt verteilt.

- Ehemalige + Studis + Mitarbeitende + Freunde + Förderer
- Menschen, die deinen Weg schon gegangen sind
- Fachwissen, Karrierewege, Tipps aus der Praxis
- Eine Community, die verbindet – egal wohin's dich verschlägt



*Be part of the party –
scannen, kostenfrei registrieren und
während Deines Studiums in
Geisenheim dank Generationenvertrag
Premium-Mitglied mit allen Vorteilen
sein:*

Wozu ist das gut?



SCAN ME

Weil dein Netzwerk oft wichtiger ist als jede Note.
Alumni bringen dich weiter –
beruflich, fachlich, menschlich.



- Kontakte für Praktika, Jobs & Abschlussarbeiten
- Insiderinfos aus deinem Wunschbereich
- Direkter Zugang zu Expert:innen weltweit
- Hubs, Round-Tables, Podcasts & Events
- Sichtbarkeit durch dein eigenes Alumni-Profil
- Support & Austausch, der wirklich weiterhilft



AROUND THE CAMPUS

LET'S GO - NEWS FROM THE GREEN OFFICE

WELCOME TO THE LATEST UPDATES FROM THE GREEN OFFICE! OUR DEDICATED TEAM WORKS TO PROMOTE SUSTAINABILITY IN RESEARCH, TEACHING, AND OPERATIONS AT OUR UNIVERSITY.

WHAT'S NEW?

NEW TEAM MEMBERS

WE ARE EXCITED TO WELCOME THREE NEW STUDENT ASSISTANTS THIS SUMMER SEMESTER. IN THE NEXT NEWSLETTER, WE WILL INTRODUCE ELENA, MAGDALENA, AND MAX IN DETAIL. WELCOME TO THE TEAM!



FACADE GREENING

IT'S FINALLY HAPPENING: AFTER THE LIVING WALL WAS INSTALLED IN OCTOBER 2025, THE TRELLISES FOR CLIMBING PLANTS HAVE NOW BEEN MOUNTED. PLANTING WILL START SOON - WE'LL KEEP YOU UPDATED. MANY THANKS TO THE STUDENTS WHO PARTICIPATED IN LAST YEAR'S SUMMER SCHOOL. WE'RE THRILLED TO BRING YOUR IDEAS TO LIFE!



WATER DISPENSERS

GREAT NEWS FOR THE START OF THE SEMESTER: DRINKING WATER DISPENSERS ARE NOW AVAILABLE IN THE NEW LECTURE HALL BUILDING AND THE CAFETERIA. STAY HYDRATED! A BIG THANK YOU TO THE INFRASTRUCTURE DEPARTMENT FOR MAKING THIS POSSIBLE.

WHAT'S COMING UP?

APRIL |

OPENING OF THE PLANT EXCHANGE SHELF

MAY 20 13-18 UHR |

HANDS-ON ACTIVITY AS PART OF THE
STUDENT INFO DAY

GET INVOLVED!

WE ALWAYS WELCOME YOUR IDEAS, FEEDBACK,
AND ENGAGEMENT ON SUSTAINABILITY TOPICS ON
OUR CAMPUS. HERE'S HOW YOU CAN PARTICIPATE:

MYHGU-APP: DOWNLOAD THE APP AND FOLLOW
THE GREEN OFFICE TO STAY UP TO DATE ON
EVENTS AND PARTICIPATION OPPORTUNITIES.

FAIRTRADE COMMITTEE: OUR UNIVERSITY IS
FAIRTRADE-CERTIFIED. IF YOU'D LIKE TO JOIN THE
STEERING COMMITTEE, EMAIL US OR SIGN UP VIA
STUDIP.

CONTACT:

E-MAIL: NACHHALTIGKEIT@HS-GM.DE

PHONE: +49 6722 502 2080



GRÜNDUNGSFABRIK RHEINGAU

DRINK INNOVATION CHALLENGE 2026: APPLICATION PORTAL NOW OPEN



IT'S YOUR TURN, DEAR GEISENHEIM STUDENTS. SHOW US ONCE AGAIN HOW MUCH CREATIVE ENERGY OUR UNIVERSITY HAS TO OFFER. STARTING NOW, YOU CAN PARTICIPATE IN THE 2026 DRINK INNOVATION CHALLENGE UNTIL **MAY 17, 2026**. ALL YOU NEED IS AN IDEA FOR A SPARKLING, BUBBLY, THIRST-QUENCHING, DELICIOUS, HEALTHY, OR SIMPLY FUTURE DRINK. CONVINCING THE JURY BY EXPLAINING WHY THE MARKET IS WAITING FOR YOUR DRINK AND WHICH SDGS THE PRODUCT CONTRIBUTES TO IN TERMS OF SUSTAINABILITY.

ON JUNE 17, THE FINALS WILL TAKE PLACE AT THE HÖR AT GEISENHEIM UNIVERSITY IN FRONT OF A LARGE AUDIENCE AND JURY. TO MAKE A STRONG IMPRESSION HERE, YOU SHOULD BRING—FOR THE JURY'S TASTE ONLY—A SMALL SENSORY SAMPLE AND A COMPELLING PRESENTATION. THE WINNERS WILL RECEIVE **PRIZE MONEY OF UP TO 2,000 EUR** AND THE BEST IDEA A **PROTOTYPE PRODUCTION AT THE GTZ** IN GEISENHEIM. OF COURSE, **WE'RE COUNTING ON YOU** TO MAKE SURE THAT GEISENHEIM IS REPRESENTED, EVEN THOUGH THE COMPETITION IS OPEN TO PARTICIPANTS FROM ALL OVER GERMANY. IT'S A MATTER OF HONOR!



AT WWW.GRUENDUNGSFABRIK-RHEINGAU/DIC26, YOU'LL FIND THE EXACT TERMS AND CONDITIONS, AN APPLICATION FORM, AND A TEMPLATE FOR YOUR CONCEPT OUTLINE. JUST DOWNLOAD IT, FILL IT OUT, AND **UPLOAD IT BACK VIA THE WEBSITE UNTIL MAY 17.**

THAT'S WHAT YOU HAVE TO DO ... AND MAYBE YOUR DRINK COMES TRUE!

ANY QUESTIONS: DIRK.KLINNER@HS-GM.DE.

WE LOOK FORWARD TO YOUR IDEAS.
DIRK KLINNER & THE GRÜNDUNGSFABRIK TEAM

YOUR DRINK COMES TRUE
DRINK INNOVATION CHALLENGE 26

DEINE IDEE, DEIN GETRÄNK!
INNOVATIV & NACHHALTIG
INSGESAMT 4.500 EUR GELDPREISE
PROTOTYP UMSETZUNG DER BESTEN IDEE

Bewirb Dich bis **17.05.2026**
www.gruendungsfabrik-rheingau.de

Unser Hauptsponsor
ECKES granini
the best of fruit

Unser Partner
AUSTRIA JUICE

Unsere Medienpartner
OBST **GETRÄNKE INDUSTRIE**

NEW SPACES, NEW WAYS OF LEARNING

DO YOU WANT TO STUDY, WORK, OR MEET UP ON CAMPUS OUTSIDE OF CLASS? SINCE STUDENT SPACES HAVE BEEN IN SHORT SUPPLY UNTIL NOW, WE'VE MADE IT OUR MISSION TO CHANGE THAT! DRIVEN BY THIS MOTIVATION, WE'VE CREATED VARIOUS SPACES AND AREAS OVER THE PAST YEAR THAT FACILITATE INDIVIDUAL OR GROUP WORK— OR SIMPLY ALLOW YOU TO RELAX BETWEEN CLASSES. CHECK OUT WHERE TO FIND THESE SPACES HERE:

[HTTPS://WWW.HS-GEISENHEIM.DE/HOCHSCHULE/ORGANISATION/ADMINISTRATIVE-EINHEITEN/HOCHSCHULDIDAKTIK-UND-ELEARNING/STUDIERENDENRAEUME](https://www.hs-geisenheim.de/hochschule/organisation/administrative-einheiten/hochschuldidaktik-und-elearning/studierendenraeume)



AG'S AT THE UNIVERSITY



COMMUNITY GARDEN

ANYONE WHO WANTS TO GARDEN TOGETHER IS WELCOME!

FOUND ON STUD.IP.

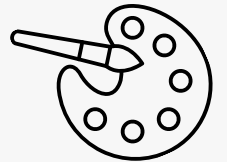
CONTACT: [DOMINIK POHL](#)

ART AG

WE WANT TO CREATE AN OPEN SPACE FOR CREATIVE EXCHANGE AND COLLABORATION. WHETHER PAINTING, DRAWING, OR JUST TRYING THINGS OUT, EVERYONE CAN PURSUE THEIR ARTISTIC ENDEAVORS HERE, EXCHANGE IDEAS WITH OTHERS, AND LEARN FROM EACH OTHER. WE ARE HAPPY TO HELP AND SUPPORT YOU. :)

FOUND ON STUD.IP.

CONTACT: [ALEXANDRA NATASCHA SZIGAT](#),
[MICHELLE VOTTELER](#)



ICE CREAM AG

FOUND ON STUD.IP.

CONTACT: [MAXIMILIAN RETTERATH](#)



AG MICRO GREENS / AG CULTIVATION SYSTEMS

FOUND ON STUD.IP UNDER "STUDY GROUP: AG CULTIVATION SYSTEMS"

CONTACT: [LEON TOLLKÜHN](#)

BEER AG

CONTACT: [TOBIAS HORN](#), [FELIX BAUMGARTNER](#)





FUNGI AG

DO YOU LIKE MUSHROOMS? DO YOU LIKE TO COOK AND MAKE THINGS YOURSELF? ARE YOU INTERESTED IN SPECIALTIES THAT ARE USUALLY ONLY SERVED IN GOURMET RESTAURANTS? THEN JOIN THE UNIFUNGIAG! OUR GOAL IS TO GROW GOURMET MUSHROOMS SUCH AS OYSTER MUSHROOMS, SHIITAKE, AND LION'S MANE AT HOME AND AT THE UNIVERSITY USING SUSTAINABLE SUBSTRATES FROM THE HGU. IF YOU ARE INTERESTED, JOIN THE UNIFUNGIAG ON STUD.IP. FURTHER INFORMATION AND A LINK TO THE WHATSAPP GROUP CAN BE FOUND IN THE STUD.IP GROUP.

FASSADENBEGRÜNUNG AG

CAN BE FOUND ON STUD.IP UNDER "PROJEKTGRUPPE: AG FASSADENBEGRÜNUNG BBB."

CONTACT: [MAREN STOLLBERG](#)

ARE THERE ANY OTHER WORKING GROUPS? PLEASE LET US KNOW SO THAT WE CAN INCLUDE THEM IN THE NEXT NEWSLETTER AT [ASTA@HS-GM.DE!](mailto:ASTA@HS-GM.DE)

UNIVERSITY SPORTS



THE SPORTS COURSES ARE LISTED ON THE UNIVERSITY SPORTS WEBSITE [HTTPS://WWW.HS-GEISENHEIM.DE/HOCHSCHULSPORT](https://www.hs-geisenheim.de/hochschulsport).

IF YOU HAVE ANY QUESTIONS OR SUGGESTIONS, PLEASE CONTACT ULRIKE SCHNEIDER BY EMAIL AT ULRIKE.SCHNEIDER@HS-GM.DE OR BY PHONE AT 06722 502 - 2841.

LIBRARY

ALL DETAILS ON BORROWING, ONLINE STOCK, INTERLIBRARY LOAN ETC. CAN BE FOUND HERE. BOOKS NO LONGER NEED TO BE PRE-ORDERED. FURTHERMORE, WITH THE VPN AT WISO.NET YOU HAVE ACCESS TO THOUSANDS OF E-BOOKS FOR FREE DOWNLOAD - LOOK HERE.

CONTACT:

PHONE (+49 6722 502 261)
E-MAIL (AUSKUNFT-BIBLIOTHEK@HS-GM.DE)
WHATSAPP (0171 10 27 571).

DURING THE SEMESTER:
MO. - THU. 09:00 – 19:00 UHR
FRIDAY 09:00 – 16:00 UHR

OUR LIBRARY IS CLOSED ON ALL PUBLIC HOLIDAYS

CANTEEN

OPENING HOURS DURING THE SUMMER SEMESTER
(07.04.2026 – 10.07.2026):

MONDAY - THURSDAY

CANTEEN OPEN FROM 08:00 TO 15:00
FOOD DISTRIBUTION VON 11:30 TO 14:00

FRIDAY

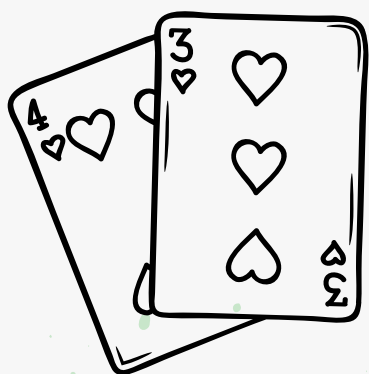
CANTEEN OPEN FROM 08:00 TO 14:00
MEALS SERVED FROM 11:30 TO 13:30

WHAT ELSE IS GOING ON....

GAME NIGHTS AND MUCH MORE AT YOUCA

DATES TO BE ANNOUNCED. YOU CAN ALSO FIND THE LATEST INFORMATION ON UPCOMING EVENTS ON INSTAGRAM: @YOUCA_GEISENHEIM

ART & BALANCE



ART & BALANCE
Kreativer Feierabendworkshop

Gönn dir nach der Arbeit eine kreative Auszeit und entdecke deine künstlerische Seite. Gemeinsam gestalten wir moderne Relief-Bilder mit Struktur- und Modellierpaste und beleben sie mit Farben.

Workshop-Details (2 Tage)
Freitag 17.04.26 und Freitag 24.04.26 jeweils 16:00 - 19:00 Uhr, 70 € inkl. Material

ORT:
YOUCA GEISENHEIM
RÜDESHEIMER STR. 27
65366 GEISENHEIM

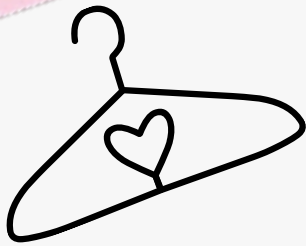
DAS ERWARTET DICH:
Einführung in Struktur- und Modellierpaste
Techniken für moderne Reliefbilder
Gestaltung deines eigenen 3D-Kunstwerks
Bemalung und Fertigstellung (Tag 2).

Anmeldung und weitere Informationen:
www.familienbildung-wiesbaden.de

KATHOLISCHE REGION WIESBADEN | RHEINGAU | TAUNUS
BISTUM LIMBURG

familienbildung
Kath. Familienbildung im Bistum Limburg

Borcelle
KUNSTKLEIN

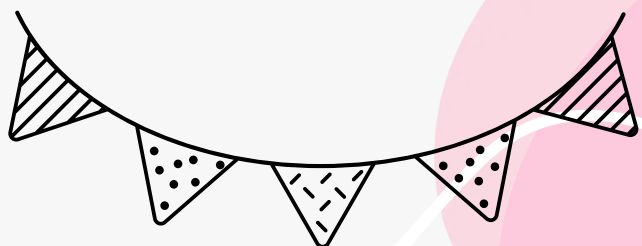


FLEA MARKET AT THE MARIENTHALER KNIRPSENLAND DAYCARE CENTER

- APRIL 18, 2026
- TIME: 10:00 AM – 1:00 PM
- MARIENTHALER KNIRPSENLAND DAYCARE CENTER, DANZIGER STR. 16, 65366 GEISENHEIM-MARIENTHAL
- [KITA KNIRPSENLAND](#)

GEISENHEIM SPRING AWAKENING, SATURDAY AND SUNDAY, APRIL 18 AND 19, 2026

THE GEISENHEIM SPRING AWAKENING INVITES YOU TO KICK OFF THE FESTIVAL SEASON IN THE RHEINGAU. AFTER THE LONG WINTER MONTHS, THE TOWN COMES BACK TO LIFE AND OFFERS VISITORS A COLORFUL WEEKEND WITH FOOD STALLS, LIVE MUSIC, REGIONAL SPECIALTIES, AND A CHEERFUL SPRING ATMOSPHERE. A CELEBRATION FOR THE WHOLE FAMILY AND EVERYONE WHO WANTS TO ENJOY SPRING TOGETHER.





RHEINGAU GOURMET WEEKS, APRIL 24–MAY 3, 2026

REGIONAL WINES, REGIONAL CUISINE, REGIONAL SPECIALTIES! VISIT THE WINERIES, WINE CELLARS, WINE TAVERNS, AND ESTATE RESTAURANTS TO TASTE THE CURRENT VINTAGE. CHAT WITH THE WINEMAKERS, TAKE PART IN VARIOUS EVENTS, AND ENJOY REGIONAL DISHES!

DURING THE RHEINGAU GOURMET WEEKS, OVER 100 WINEMAKERS, WINE TAVERNS, AND RESTAURANTS OPEN THEIR CELLARS AND ESTATES. YOU CAN TASTE THE NEW VINTAGE, ATTEND MUSICAL EVENTS, EXPLORE THE RHEINGAU VINEYARDS, AND MUCH MORE:

[RHEINGAUER SCHLEMMERWOCHEN - 24. APRIL BIS
03. MAI 2026](#)

PLANT MARKET ON APRIL 25, 2026, FROM 8:30 A.M. TO 12:00 P.M. IN STEPHANSHAUSEN



LARGE FLOWER AND PLANT MARKET AT KÖRBERPLATZ, STEPHANSHAUSEN, HAUPTSTRASSE, 65366 GEISENHEIM-STEPHANSHAUSEN. A WIDE SELECTION OF GARDEN AND BALCONY PLANTS IN NURSERY QUALITY, PLANTED HANGING BASKETS, AS WELL AS FERTILIZER AND POTTING SOIL WILL BE AVAILABLE. VISITORS CAN HAVE THEIR OWN PLANTERS PLANTED UPON REQUEST.

MORE INFOS: VVV-STEPHANSHAUSEN@WEB.DE

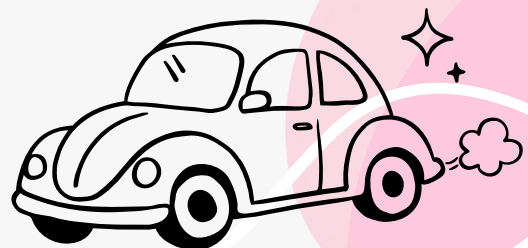
ASTA GOOD TO KNOW

CARPOOLING

YOU HAVE A FREE SEAT IN THE CAR OR DON'T KNOW HOW TO GET TO YOUR FAMILY NEXT WEEKEND? ENCLOSED YOU WILL FIND A LINK TO A WHATSAPP GROUP CREATED BY THE ASTA TO MAKE IT EASIER TO FIND A RIDE. THE OFFERS POSTED IN THIS GROUP ARE NOT MANAGED BY THE ASTA. THE GROUP IS ONLY INTENDED TO PROVIDE A PLATFORM FOR THOSE OFFERING AND THOSE LOOKING FOR A RIDE. YOU ARE ALL WELCOME TO JOIN THE GROUP AND PARTICIPATE. WE THINK CARPOOLING IS A GOOD AND EASY WAY TO REDUCE OUR CARBON FOOTPRINT AND CONTRIBUTE A SMALL PART TO SAVING GREENHOUSE GASES.

CLICK HERE:

[HTTPS://CHAT.WHATSAPP.COM/KUHWZINFICY09MI0ZGSUUW](https://chat.whatsapp.com/kuhwzinficy09mi0zgsuuw)



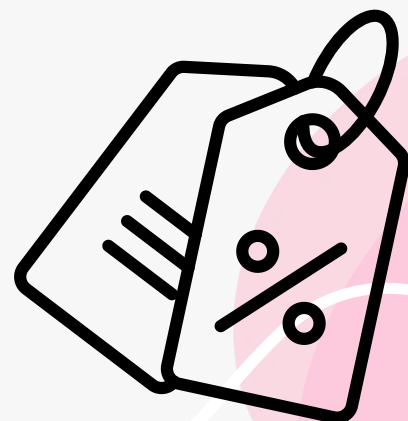
KLEINANZEIGEN

A GROUP FOR ALL THOSE WHO LIKE TO RUMMAGE.

HERE YOU CAN OFFER SMALL ITEMS FOR SALE OR AS GIFTS TO OTHER STUDENTS AND SEE FOR YOURSELF WHAT IS ON OFFER. THIS HELPS TO ENSURE THAT USED ITEMS, PLANTS AND OTHER THINGS FIND A NEW OWNER AND DON'T END UP IN THE BIN. ENCLOSED YOU WILL FIND A LINK TO A WHATSAPP GROUP CREATED BY THE ASTA. THE OFFERS POSTED IN THIS GROUP ARE NOT MANAGED BY THE ASTA. THE GROUP IS ONLY INTENDED TO PROVIDE A PLATFORM FOR THOSE OFFERING AND THOSE LOOKING FOR A JOB. YOU ARE WELCOME TO JOIN THE GROUP AND PARTICIPATE.

CLICK HERE:

[HTTPS://CHAT.WHATSAPP.COM/IUDXEGTOWGSK4SHK12FG5S](https://chat.whatsapp.com/IUDXEGTOWGSK4SHK12FG5S)



DAS ALTE WEINFASS

AFTER A HARD DAY AT UNIVERSITY GET OUT AND MEET PEOPLE? NO PROBLEM WITH OUR COZY EVENINGS AT THE OLD WINE BARREL!

WITH A GLASS OF WINE, A BOTTLE OF BEER OR A SOFT DRINK AND GOOD MUSIC, YOU CAN MEET NEW STUDENTS OR RELAX WITH YOUR RELAX WITH YOUR FELLOW STUDENTS. AND THERE'S ALWAYS A BITE TO EAT.

EVERY THURSDAY FROM 4:00 PM



ASTA OFFICE & STORE

THE ASTA OFFICE IS YOUR PHYSICAL POINT OF CONTACT IF YOU HAVE ANY QUESTIONS OR SUGGESTIONS FOR US. BY THE WAY, WE ALSO HAVE A LOAN SERVICE: FROM IMPACT DRILLS TO BICYCLES. MAYBE WE CAN HELP OUT? OR DO YOU NEED STUDY MATERIALS FOR LITTLE MONEY?

OUR ASTA SHOP OFFERS A WIDE RANGE OF STATIONERY. WHY DON'T YOU DROP BY?

BUT PAYMENT IS **ONLY POSSIBLE BY CARD OR CONTACTLESS!!!** WE ACCEPT: VISA, MASTERCARD, AMERICAN EXPRESS, GOOGLE PAY, AND APPLE PAY."

THE SHOP OPENS ITS DOORS IN THE SUMMER SEMESTER 2026

**TUESDAYS FROM 12.00-13.30 AM AND
WEDNESDAYS FROM 4 - 6 PM!**



WE ONLY HAVE **A FEW GEISENHEIM UNIVERSITY SWEATERS** LEFT IN BLACK AND GRAY!



JUST STOP BY THE SHOP DURING BUSINESS HOURS OR MAKE AN APPOINTMENT TO PICK UP A SWEATER FOR **€30**.

WE ARE ALSO OFFERING THE FOLLOWING BOOKS AT A REDUCED PRICE:

BETRIEBSWIRTSCHAFT – ERFOLGREICHE UNTERNEHMENSFÜHRUNG IM WEINGUT

474 PAGES, 160 ABB.
ISBN 978-3-940456-98-4

ZEIT. – ZEITMANAGEMENT,
PERSÖNLICHKEITSENTWICKLUNG & TEAMFÜHRUNG
254 PAGES
ISBN 978-3-96031-000-6

BESTELLUNG ÜBER DEN ASTA: 15 € (LVP € 29,50)

PLEASE SEND US AN E-MAIL TO BUERO@ASTA-GEISENHEIM.DE OR SIMPLY DROP BY DURING THE SHOP'S OPENING HOURS.



MEETINGS

STUPA MEETING

13.04. 19:00
IN THE ASTA-STUDY ROOM

ASTA MEETING

14.04. 18:00
IN THE ASTA-STUDY ROOM

CONTACT

ASTA OFFICE
BRENTANOSTR. 9, 65366
E-MAIL: ASTA@HS-GM.DE
PHONE: 06722/502 717

FOLLOW THE ASTA AUF FACEBOOK AND
INSTAGRAM FOR THE LATEST NEWS!

[INSTAGRAM](#)
[FACEBOOK](#)

OUR FACEBOOK GROUPS: ARE YOU LOOKING FOR A
PART-TIME JOB, A NEW FLAT SHARE OR WOULD
YOU LIKE TO FIND OUT MORE ABOUT EVENTS IN
GEISENHEIM? THEN YOU SHOULD DEFINITELY TAKE
A LOOK AT OUR FACEBOOK GROUPS UNDER THE
FOLLOWING LINKS.

[JOBBÖRSE](#)
[WG- & WOHNUNGSBÖRSE](#)